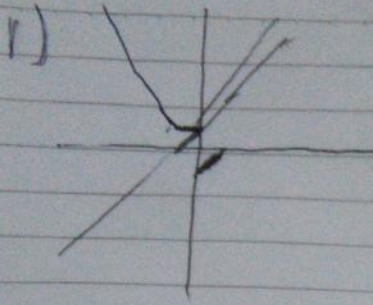
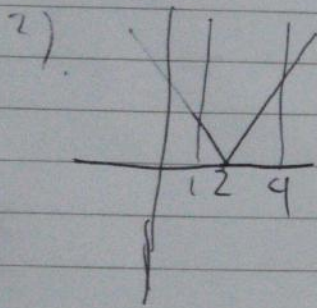


Ryo Keurewangs
220791201

Date



~~hulu~~ $2x+1 = x+1$



~~$$\int_1^4 \pi|x-2| dx = \int_1^4 \pi(x-2) dx = \left[\frac{1}{2}\pi x^2 - 2\pi x \right]_1^4 = (8\pi - 8\pi) - \left(\frac{1}{2}\pi - 2\pi\right) = 6\pi - \left(-\frac{3}{2}\pi\right) = \frac{15}{2}\pi$$~~

$$x_1 = \int_2^4 \pi(x-2) dx = \int_2^4 (\pi x - 2\pi) dx$$

$$= \left[\frac{1}{2}\pi x^2 - 2\pi x \right]_2^4 = (8\pi - 8\pi) - (2\pi - 4\pi) = 0\pi + 2\pi = 2\pi$$

$$x_2 = \int_1^2 \pi(x-2) dx = \int_1^2 (\pi x - 2\pi) dx = \left[\frac{1}{2}\pi x^2 - 2\pi x \right]_1^2 = (2\pi - 4\pi) - \left(\frac{1}{2}\pi - 2\pi\right) = -2\pi - \left(-\frac{3}{2}\pi\right) = -\frac{1}{2}\pi$$